



F O N T A I N E B L E A U

M I A M I B E A C H

C O A S T A L C O N V E N T I O N C E N T E R



## FACTS AT A GLANCE

### LOCATION

- 12 miles from Miami International Airport
- 28 miles from Fort Lauderdale - Hollywood International Airport

### GUESTROOMS & SUITES

- 1,504 guestrooms and suites
- Variety of spacious suites including the Trésor Tower Penthouse, featuring two 4,500 square foot, five-bedroom, five-and-a-half bath penthouses; Versailles Hospitality Suites

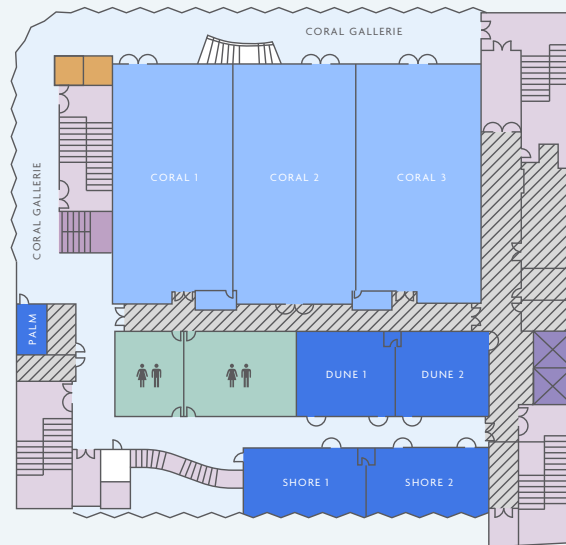
### COASTAL CONVENTION CENTER MEETING SPACE

- 45,000 square feet
- 16,500 square foot ballroom
- 9,500 square foot junior ballroom
- 15,000 square feet of pre-function space
- 15 total meeting rooms
- 9,000 square feet of outdoor function space

### AMENITIES

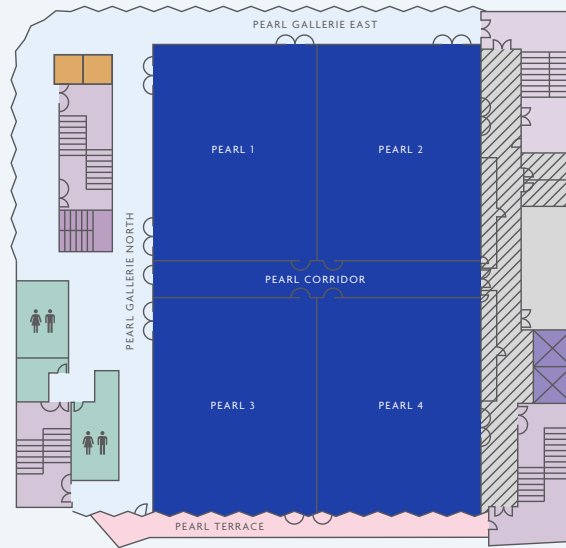
- 12 fine dining and casual restaurants— Michelin-starred and AAA Four Diamond award-winning Hakkasan; Mirabella from Michelin-starred and James Beard award-winning chef Michael White; and the hotel's innovative alternative to the traditional steakhouse, Prime 54
- Legendary entertainment including world famous LIV™ Nightclub, the BleauLive Concert Series, and iconic Bleau Bar
- The Art of Fontainebleau
- Luxury 40,000-square-foot Lapis Spa & Salon
- 5,800 square-foot Gym
- Daily circuit training class, weekend yoga at the beach, complimentary beach cruisers, and a selection of non-motorized sports included with your stay
- The Shops at Fontainebleau
- 11 pools, 33 lavish cabanas, beach with water sports, Fontainebleau Marina
- Golf and tennis nearby

## SECOND FLOOR



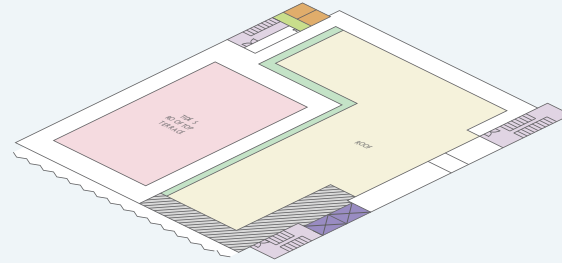
- MEETING ROOMS
- JUNIOR BALLROOMS
- RESTROOMS
- GALLERIE
- GRAND STAIRCASE
- STAIRS
- ELEVATORS
- FREIGHT ELEVATORS
- BACK OF HOUSE

# FOURTH FLOOR

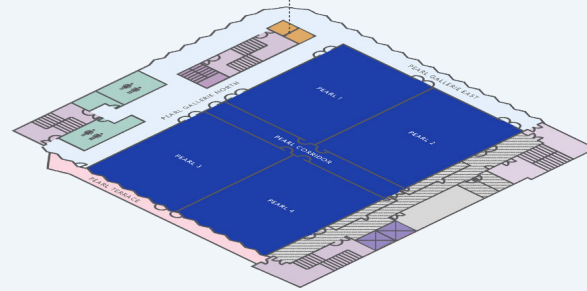


- BALLROOMS
- RESTROOMS
- TERRACE
- GALLERIE
- GRAND STAIRCASE
- STAIRS
- ELEVATORS
- FREIGHT ELEVATORS
- BACK OF HOUSE

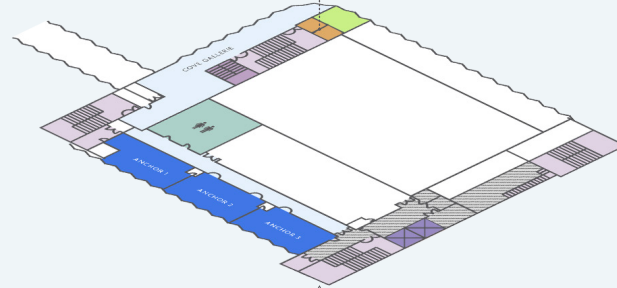
# COASTAL CONVENTION CENTER



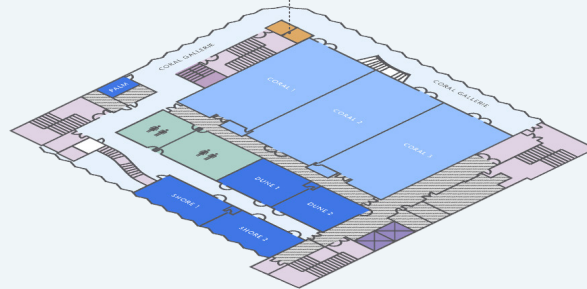
FIFTH FLOOR



FOURTH FLOOR



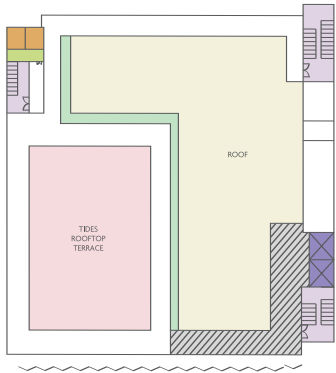
THIRD FLOOR



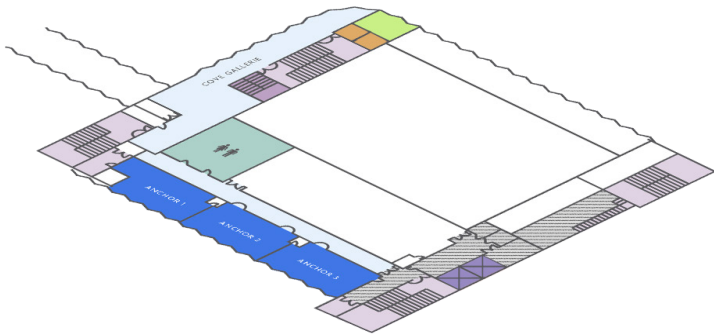
SECOND FLOOR

- BALLROOMS
- MEETING ROOMS
- JUNIOR BALLROOMS
- TERRACE
- GALLERIE
- GRAND STAIRCASE
- STAIRS
- ELEVATORS
- RESTROOMS
- FREIGHT ELEVATORS
- BACK OF HOUSE

# FIFTH FLOOR - ROOFTOP



# THIRD FLOOR



- MEETING ROOMS
- TERRACE
- GALLERIE
- GRAND STAIRCASE
- STAIRS
- ELEVATORS
- RESTROOMS
- FREIGHT ELEVATORS
- BACK OF HOUSE





MEETING ROOM	SQUARE FEET	LENGTH IN FEET	WIDTH IN FEET	CEILING HEIGHT	THEATER	CLASSROOM 3 PER 6'	BANQUET 10 PER 72" ROUND	RECEPTION	CONFERENCE	HOLLOW SQUARE
<b>FIFTH FLOOR</b>										
TIDES ROOFTOP TERRACE	7,001	80'	90'	—	—	—	480	500	—	—
<b>FOURTH FLOOR</b>										
PEARL BALLROOM	16,500	107.2'	148.7'	18' 0"	1200	860	1000	1100	—	—
PEARL 1	3,767	53'	70'	18' 0"	300	200	240	265	—	80
PEARL 2	3,753	53'	70'	18' 0"	300	200	240	265	—	80
PEARL 3	3,789	53'	70'	18' 0"	300	200	240	265	—	80
PEARL 4	3,768	53'	70'	18' 0"	300	200	240	265	—	80
PEARL 1/2	7,520	107.2'	70'	18' 0"	600	400	480	530	—	120
PEARL 1/2/PEARL CORRIDOR	8,805	107.2'	80'	18' 0"	700	450	540	550	—	120
PEARL 3/4	7,557	107.2'	70'	18' 0"	600	400	480	530	—	120
PEARL 3/4/PEARL CORRIDOR	8,842	107.2'	80'	18' 0"	700	450	540	550	—	120
PEARL CORRIDOR	1,285	107.2'	12'	18' 0"	—	—	—	—	—	—
PEARL TERRACE	1,016	115'	9'	18' 0"	—	—	—	100	—	—
PEARL GALLERIE NORTH	1,285	107.2'	12'	18' 0"	—	—	—	—	—	—
PEARL GALLERIE EAST	1,016	115'	9'	18' 0"	—	—	—	100	—	—
<b>THIRD FLOOR</b>										
ANCHOR 1/2/3	2,728	126'	20.9'	10' 0"	200	123	220	245	100	120
ANCHOR 1	917	46'	20.9'	10' 0"	80	45	70	80	36	40
ANCHOR 2	928	40'	20.9'	10' 0"	72	39	60	85	30	40
ANCHOR 3	883	39'	20.9'	10' 0"	72	39	60	80	33	40
ANCHOR 1/2	1,845	86'	20.9'	10' 0"	154	90	140	165	66	72
ANCHOR 2/3	1,811	79'	20.9'	10' 0"	140	78	140	165	66	72
<b>SECOND FLOOR</b>										
CORAL BALLROOM	9,500	120.3'	79'	17' 1"	800	500	700	800	—	—
CORAL 1	3,142	40.5'	79'	17' 1"	300	125	210	300	—	80
CORAL 2	2,935	39.7'	79'	17' 1"	300	115	210	300	—	80
CORAL 3	3,123	40.3'	79'	17' 1"	300	120	210	300	—	80
CORAL 1/2	6,077	80'	79'	17' 1"	570	350	420	600	—	120
CORAL 2/3	6,058	79.8'	79'	17' 1"	570	350	420	600	—	120
DUNE 1	890	32'	28.9'	11' 0"	70	48	60	75	24	40
DUNE 2	858	30'	28.9'	11' 0"	70	48	60	70	24	40
DUNE 1/2	1,748	62.4'	28.9'	11' 0"	140	96	120	145	48	72
SHORE 1	851	39'	20.2'	10' 0"	70	35	60	70	30	40
SHORE 2	858	39'	20.2'	10' 0"	70	35	60	70	30	40
SHORE 1/2	1,709	79.5'	20.2'	10' 0"	140	70	120	140	60	40
PALM	150	19.1'	8.2'	7'8"	—	6	—	—	—	—
CORAL GALLERIE	4,500									





FONTAINEBLEAU MIAMI BEACH

4441 COLLINS AVENUE MIAMI BEACH FL 33140 | 305-538-2000 FONTAINEBLEAU.COM